

Geographic Data Science - Lecture I

Introduction

[Dani Arribas-Bel](#)

Today

- This course
- The (geo-)data revolution
- (Geo-)Data Science

This course

Quiz

- Have you ever heard the terms "**Big Data**" and "**Data Science**"?
- Have you ever written a line of computer code?
- How would you define in one sentence "Data Science"?
- Do you think "**Geographic Data Science**" is closer to GIS or Statistics?

More stats than a GIS course, more GIS than a stats course...

...but in a fun way!

Structure

11 weeks of:

- **Prep. materials:** videos, podcasts, articles... 1h. approx. (most recommended!)
- **1h. Lecture:** concepts, methods, examples
- **2h. Computer practical:** hands-on, application of concepts, Python (highly *employable*)
- **Further readings:** how to go beyond the minimum

IMPORTANT: Week 7 has no class! [Labs are booked so I recommend you spend the lab time working on your first assignment]

Website

<http://darribas.org/gds15>

gds15



ENVS363/563

Geographic Data Science

This is the course website for Geographic Data Science, taught by Dani Arribas-Bel in the Autumn of 2015 at the University of Liverpool.

The timetable for the course is:

- **Lectures:** Thursdays - 12:30/13:30, **MATH-029**.
- **Computer Labs:** Thursdays - 15:00/17:00, **CTL-6-PCTC-Blue** (with the exception of Week 3, Thursday Oct. 15th, which is at **GUILD-SUTC** and **ELEC-304**).

Locations

- **MATH-029** : Mathematics Building, Room 029, Building Ref: 206 Grid. Ref: E6 on the campus map.
- **CTL-6-PCTC-Blue** : Central Teaching Laboratory, PC Centre, Blue Zone. Building Ref: F6 on campus map.
- **GUILD-SUTC** : Guild of Students, Pc Centre. Building Ref: 406. Grid Ref: D4 on campus map.
- **ELEC-304** : Electrical Engineering, Room 304. Building Ref: 235. Grid Ref: E7 on the

Philosophy

- (Lots of) **methods** and techniques
 - General overview
 - Intuition
 - Very little math
- Emphasis on the **application**
- Close connection to "**real world**" applications
- **FUN**

Assignments

- Mark based on two assignments, due:
 1. Week 8 (50%)
 2. Week 13 (50%)
- Coursework
- **Equivalent to 2,500: report with code, figures (e.g. maps), and text**

The (geo-)data revolution

The (geo-)data revolution

Exciting times to be a:

- Geographer
- Map fan
- Data fan

The world is being "datafied"...

"Datafication"

Quantification of phenomena through the systematic recording of data

"taking all aspects of life and turning them into data" [Cukier & \(Mayer-Schoenberg\)](#)

Examples: credit transactions, public transit, tweets, facebook likes, spotify songs, etc.

"Datafication"

Many implications:

- Opportunities for optimization of systems (Industrial IoT, planning systems...)
- **Window** into human **behaviour** (this course)
- Issues with **intentionality** and **privacy**
- ...

Why now?

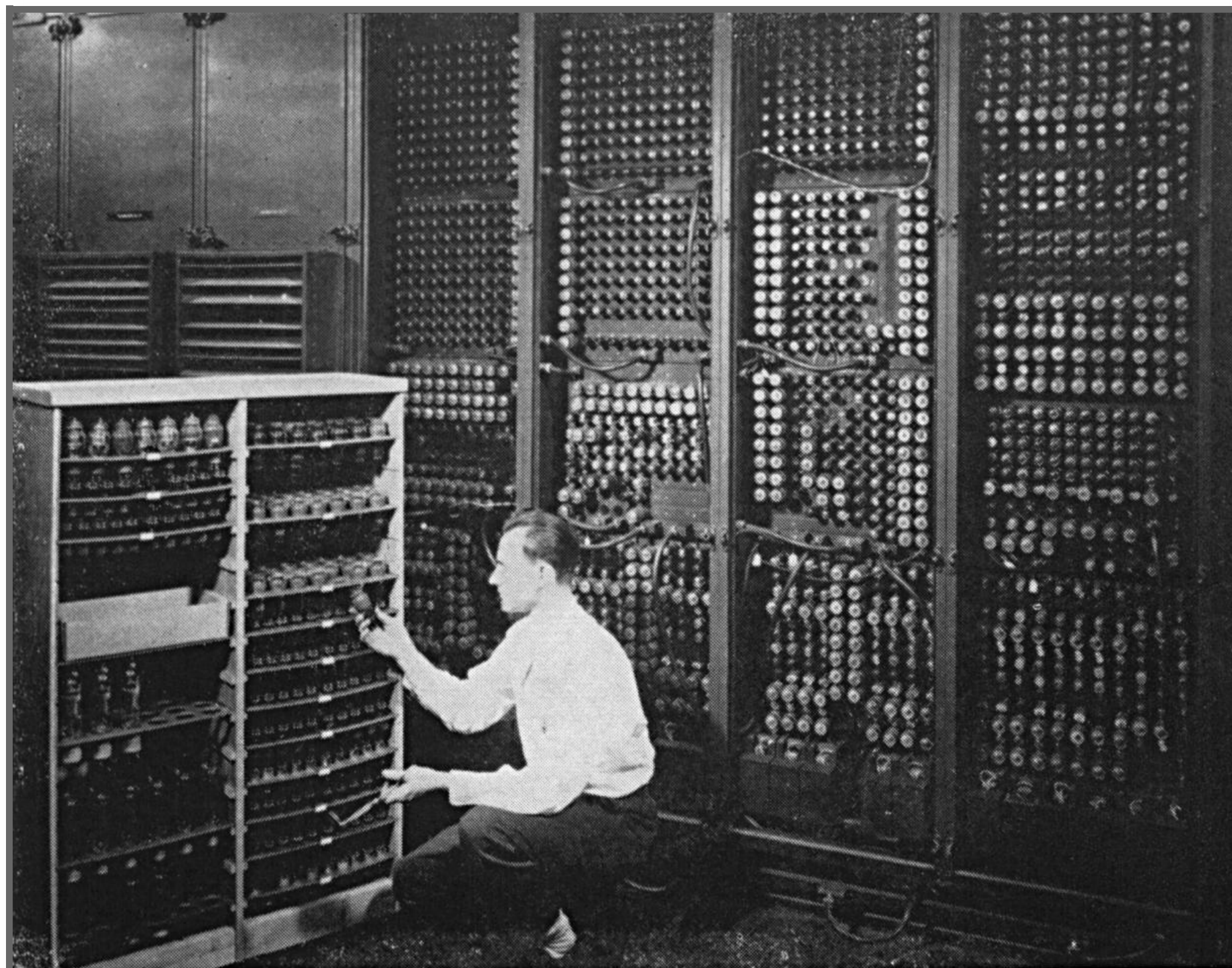
Why now?

Advances in:

- Computing power
- Communication
- Geospatial technology

Why now? --> Computing power

Source



Replacing a bad tube meant checking among ENIAC's 19,000 possibilities.

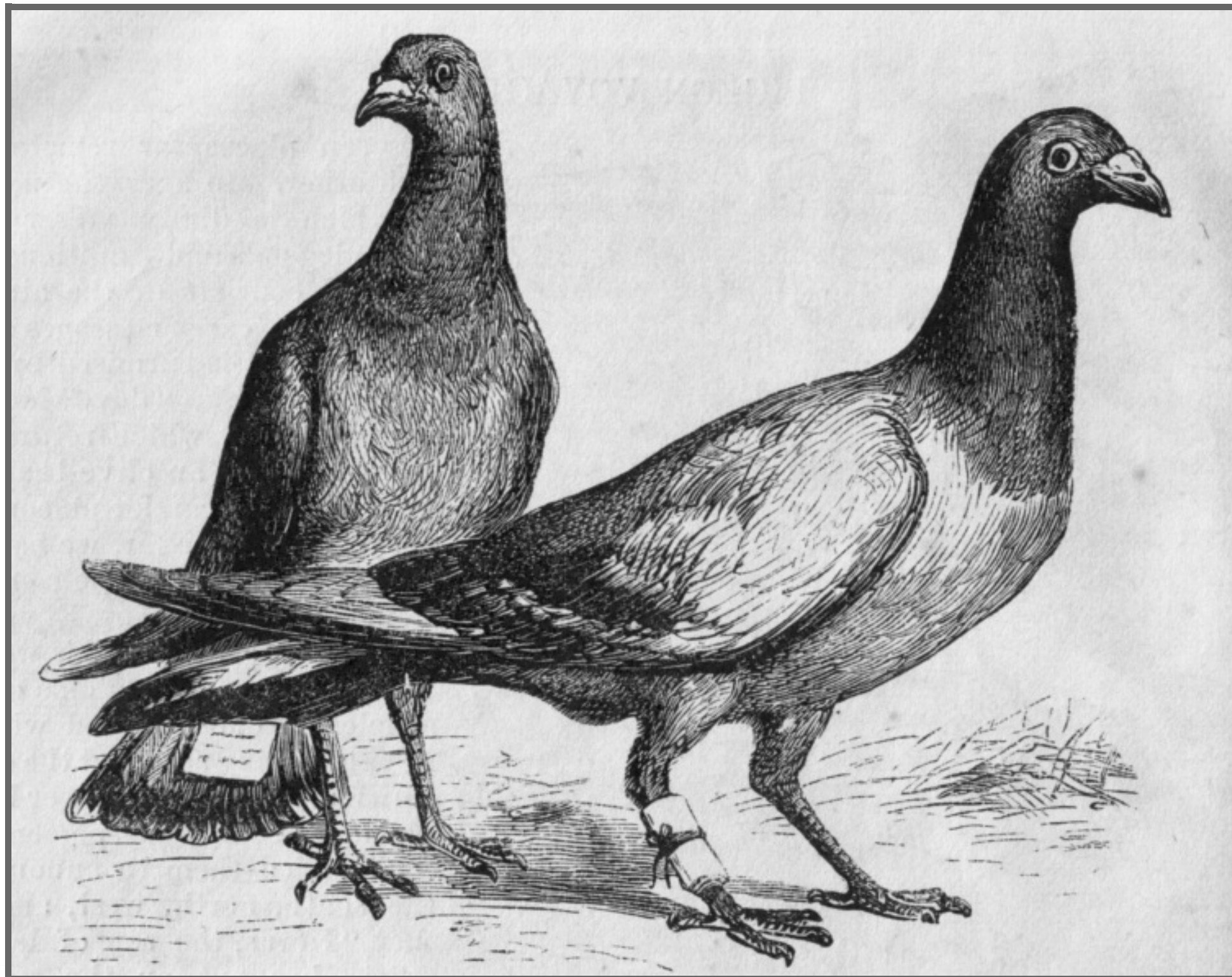
Why now? --> Computing power

Source



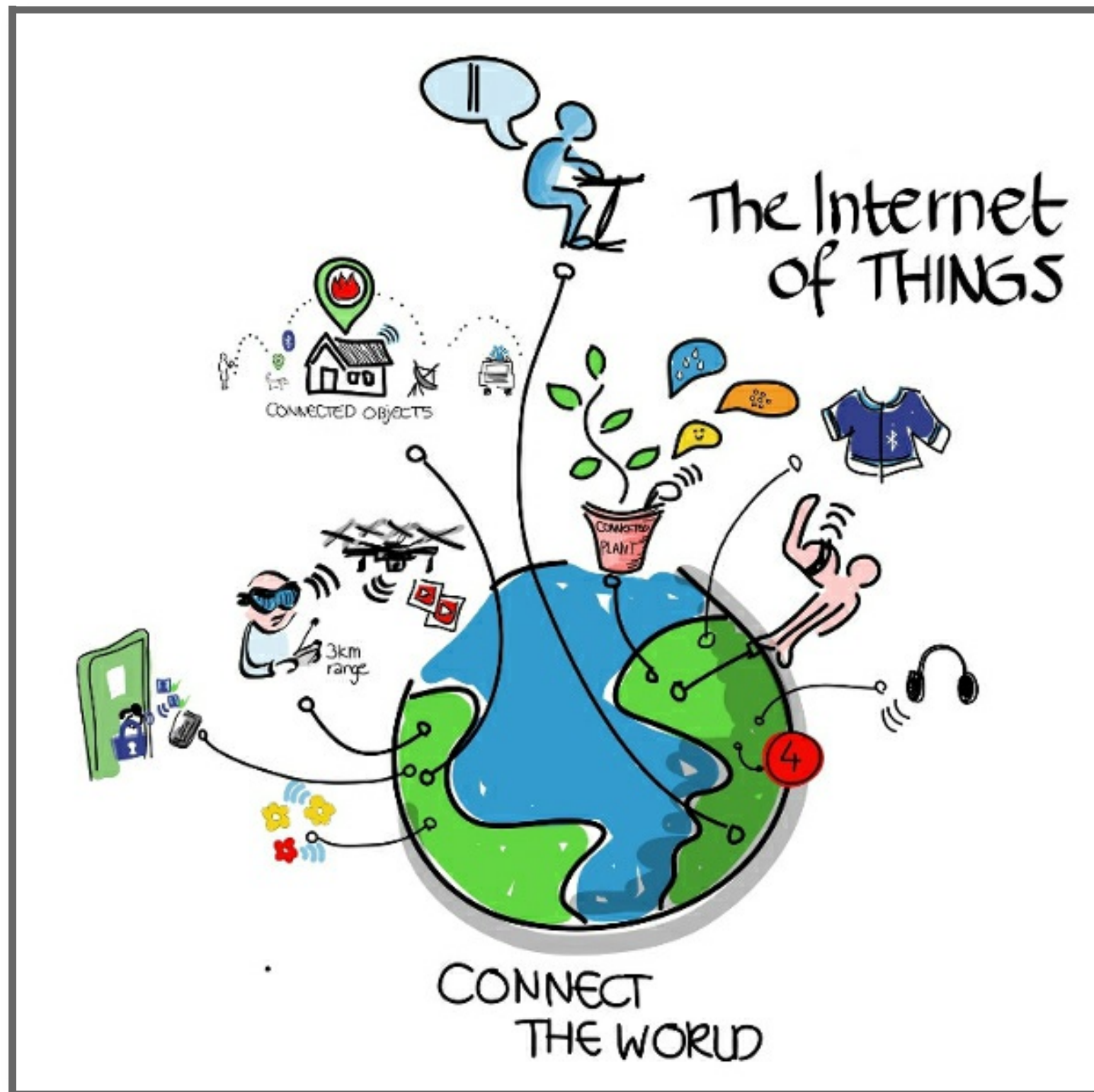
Why now? --> Communication

Source



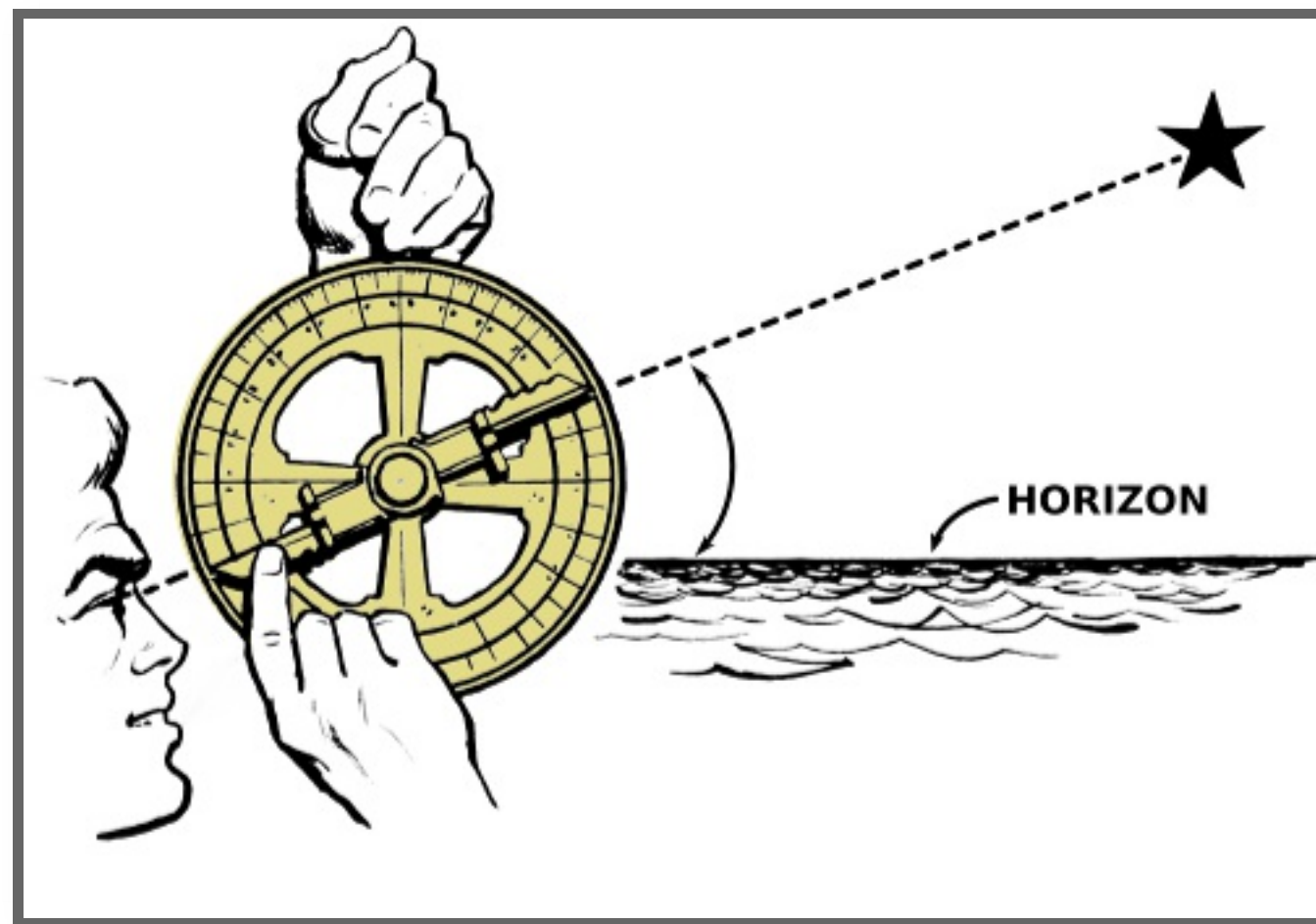
Why now? --> Communication

Source



Why now? --> Geospatial technology

Source



Why now? --> Geospatial technology

Source



The (geo-)data revolution

The confluence of the three (computing, communication and geospatial) is creating large amounts of data.

Now, **data in itself is not very valuable:**

- Data --> Information --> Knowledge --> Action

Data Science

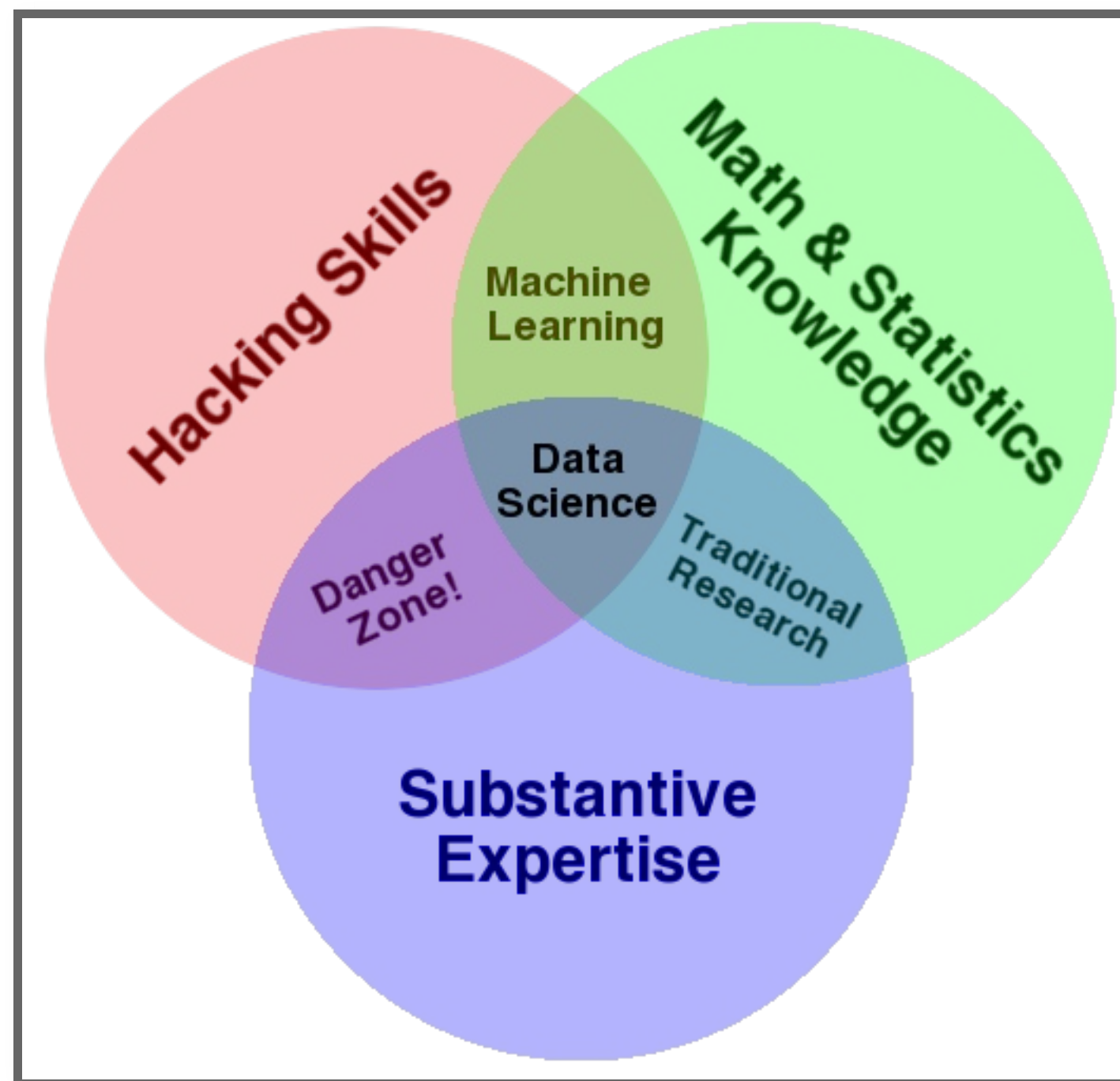
Methods, tools and techniques to turn data into actionable knowledge

But wait, isn't statistics just that?

Not only...

Data Science

Source: Drew Conway



Data Science

Statistics is a *very* important part of DS...

... but not the only one:

- **Computational tools** --> Programming (hence this course's tutorials!)
- **Communication skills** --> "Story telling" (hence this course's assignments)
- **Domain expertise** --> Theories about why the data are the way they are (hence the rest of your degree)

Data Science

- Not all new (standing on the shoulders of giants)
- "The data becomes key part in the product"
- Focus on actionability and solving particular problems

Some examples...



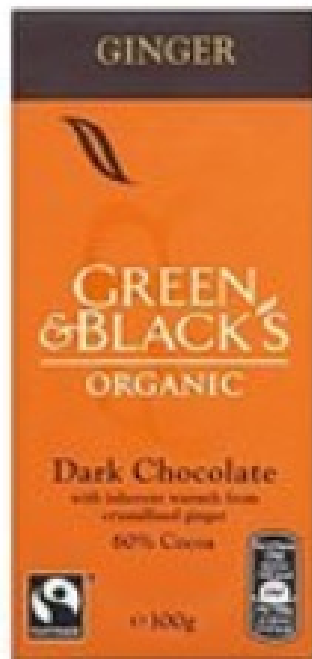
Total price: £32.97

Add all three to Basket

These items are dispatched from and sold by different sellers. [Show details](#)

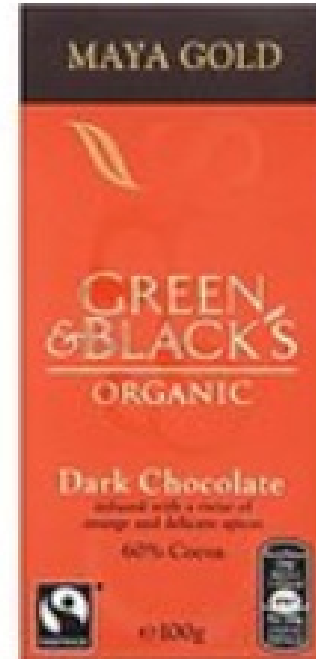
- This item:** Green and Black's Organic Dark Chocolate 85 Percent Cocoa 100 g (Pack of 5) £11.62 (£2.32 / 100 g)
- [Green and Black's Organic Ginger Dark 100 g \(Pack of 5\)](#) £10.40 (£2.08 / 100 g)
- [Green and Black's Organic Dark Chocolate Maya Gold 100 g \(Pack of 5\)](#) £10.95 (£2.19 / 100 g)

Customers Who Bought This Item Also Bought



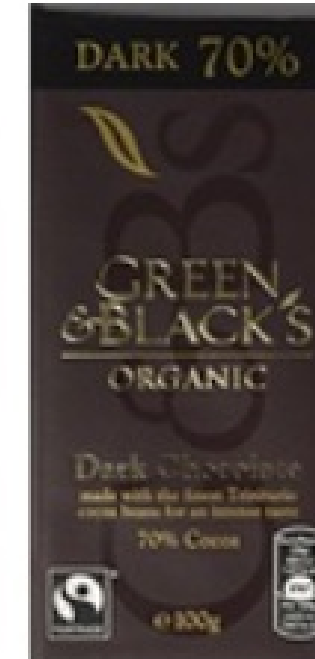
Green and Black's Organic Ginger Dark 100 g (Pack of 5)

★★★★☆ 15



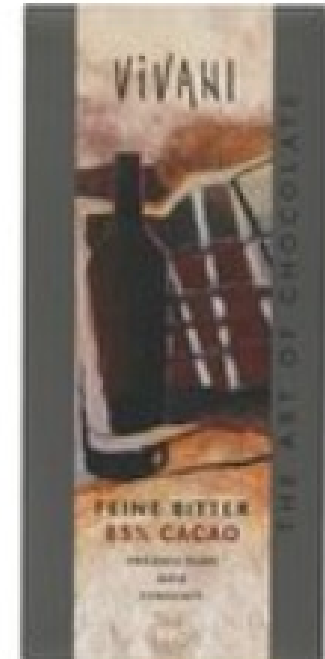
Green and Black's Organic Dark Chocolate Maya Gold 100 g (Pack of 5)

★★★★★ 5



Green and Black's Organic Dark Chocolate 100 g (Pack of 5)

★★★★★ 22



Vivani Organic Dark Chocolate with 85% Cacao 100 g (Pack of 5)

★★★★☆ 25



Total price: £32.97

Add all three to Basket

These items are dispatched from and sold by different sellers. [Show details](#)

- ✓ **This item:** Green and Black's Organic Dark Chocolate 85 Percent Cocoa 100 g (Pack of 5) £11.62 (£2.32 / 100 g)
- ✓ [Green and Black's Organic Ginger Dark 100 g \(Pack of 5\)](#) £10.40 (£2.08 / 100 g)
- ✓ [Green and Black's Organic Dark Chocolate Maya Gold 100 g \(Pack of 5\)](#) £10.95 (£2.19 / 100 g)

Amazon

Customers Who Bought This Item Also Bought



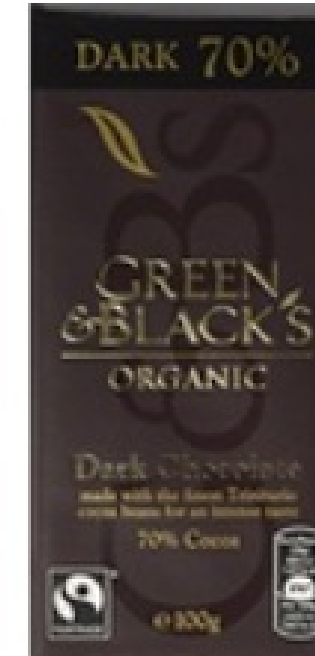
Green and Black's Organic Ginger Dark 100 g (Pack of 5)

★★★★☆ 15



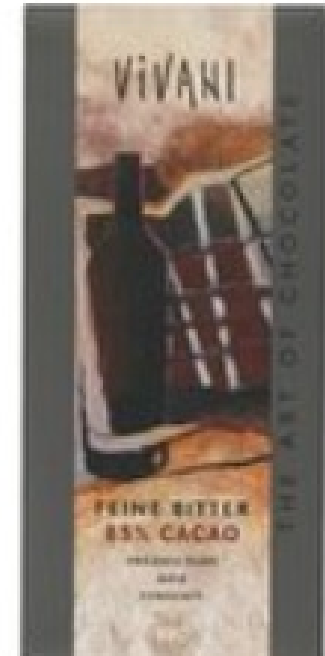
Green and Black's Organic Dark Chocolate Maya Gold 100 g (Pack of 5)

★★★★★ 5



Green and Black's Organic Dark Chocolate 100 g (Pack of 5)

★★★★★ 22



Vivani Organic Dark Chocolate with 85% Cacao 100 g (Pack of 5)

★★★★☆ 25



Join the best free dating site on Earth.

I am a

Straight

Woman

Continue



Signing up takes two minutes and is totally free.



Our matching algorithm helps you find the right people.



iOS or Android?
You can take us to go.



Join the best free dating site on Earth.

I am a

Straight

Woman

Continue

Dating sites



Signing up takes two minutes and is totally free.



Our matching algorithm helps you find the right people.



iOS or Android? You can take us to go.



UBER

LONDON

MENU

LOG IN

SIGN UP

FARE ESTIMATE +

LONDON x





UBER

LOG IN

SIGN UP

LONDON

Uber

FARE ESTIMATE



LONDON



Geo-Data Science

Geo-Data Science

- A (very) large portion of all these new data are inherently **geographic** or can be traced back to some location over space.
- Spatial is special.
- Some of the methods require an explicitly spatial treatment --> (Geo-)Data Science

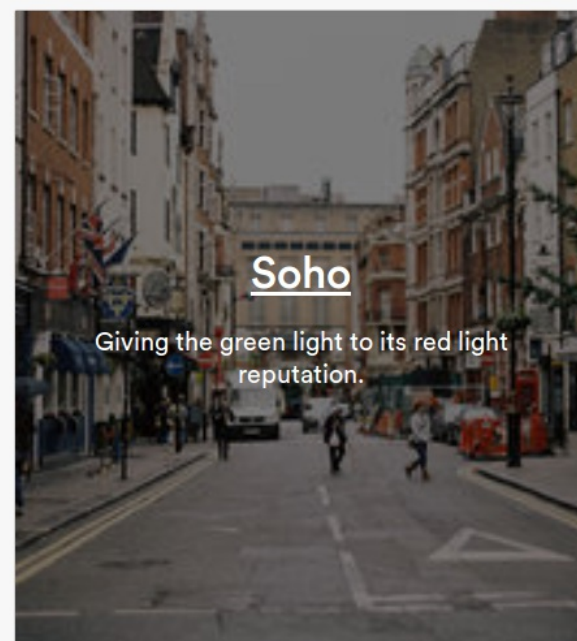
Some examples...

Find a Neighbourhood in London

What kind of neighbourhood are you looking for?

- Dining ×
- Artsy 7
- Nightlife 9
- Shopping 15
- Loved by Londoners 11
- Touristy 14
- Great Transit 13
- Museums & the Arts 10
- Peace & Quiet 7
- Along the River Thames 5
- West End 7

23 neighbourhoods match Dining. [See all listings](#)



Soho

Giving the green light to its red light reputation.

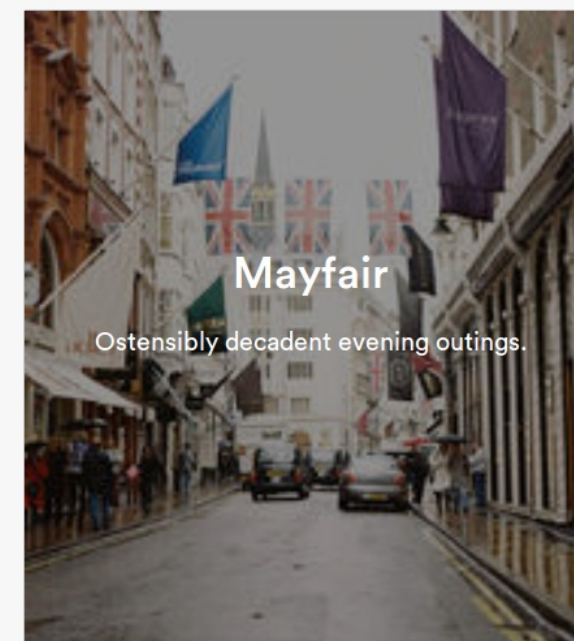
Eclectic • Open-minded • China Town • Lgbt Friendly



Whitechapel/Brick Lane

Gritty outside with gallant insides.

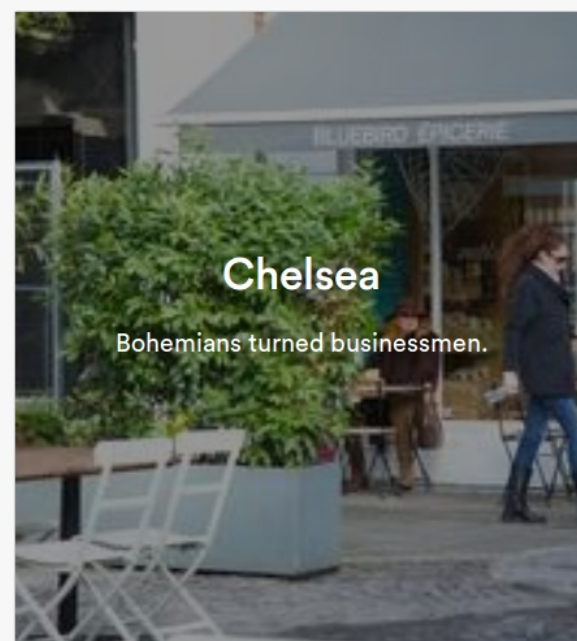
Buzzing • Curry • Arty • Graffiti



Mayfair

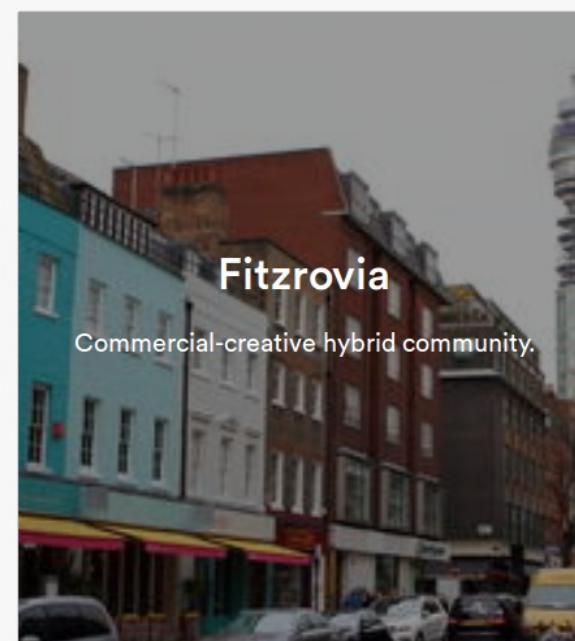
Ostensibly decadent evening outings.

Luxury Shopping • Ballrooms • Heart Of London • Fashionable



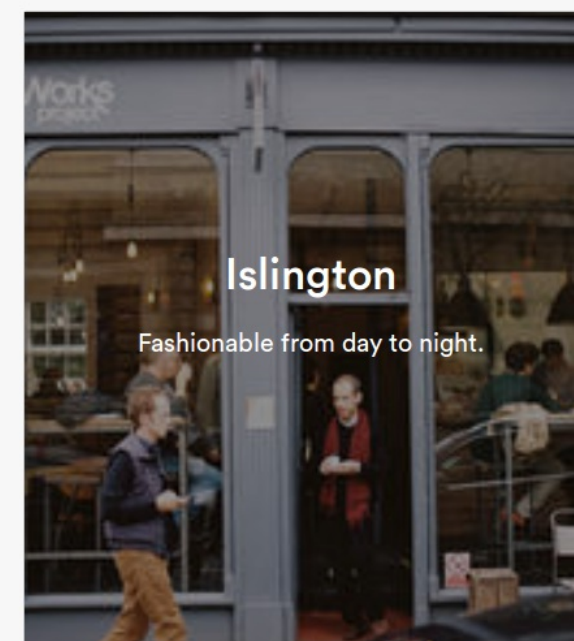
Chelsea

Bohemians turned businessmen.



Fitzrovia

Commercial-creative hybrid community.



Islington

Fashionable from day to night.

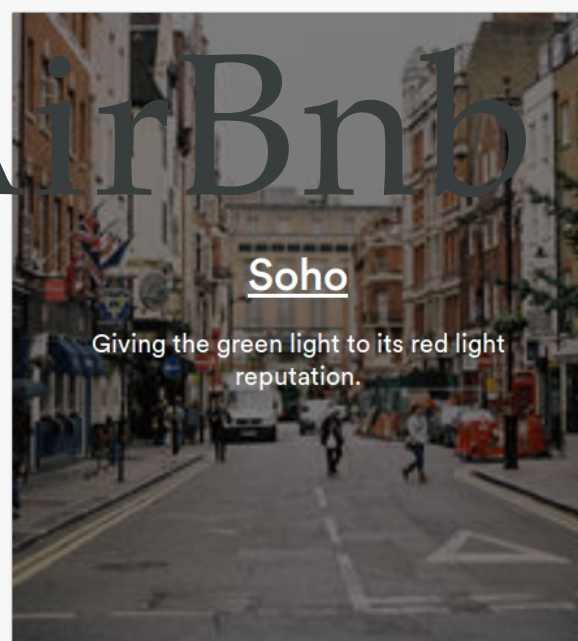
Find a Neighbourhood in London

What kind of neighbourhood are you looking for?

- Dining ×
- Artsy 7
- Nightlife 9
- Shopping 15
- Loved by Londoners 11
- Touristy 14
- Great Transit 13
- Museums & the Arts 10
- Peace & Quiet 7
- Along the River Thames 5
- West End 7

23 neighbourhoods match Dining. [See all listings](#)

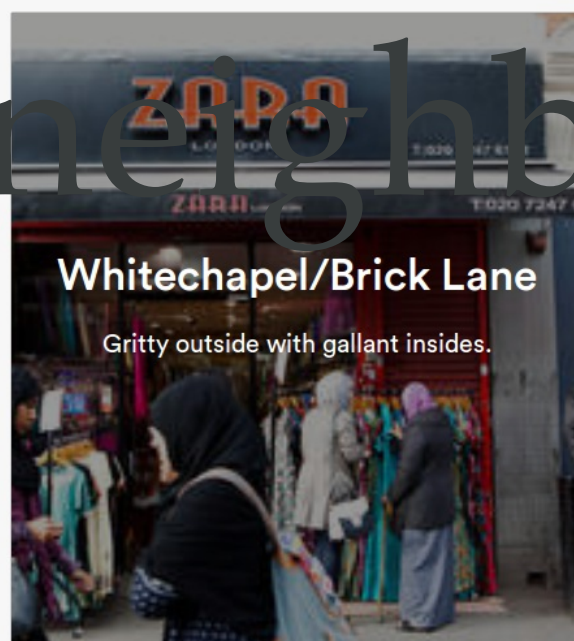
AirBnb neighborhoods



Soho

Giving the green light to its red light reputation.

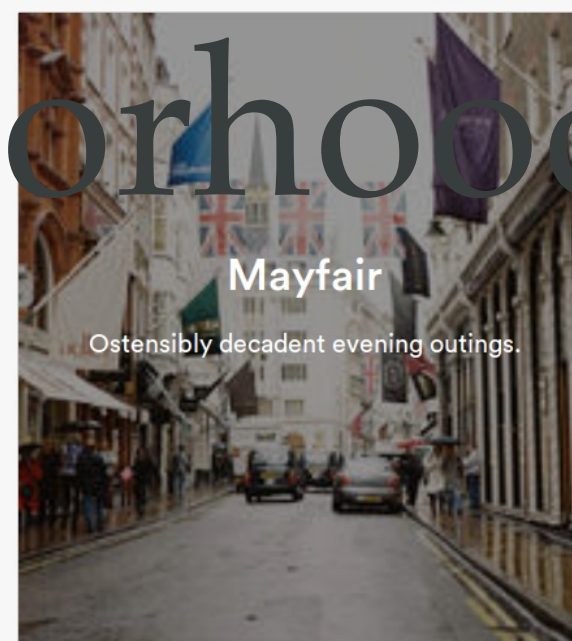
Eclectic • Open-minded • China Town • Lgbt Friendly



Whitechapel/Brick Lane

Gritty outside with gallant insides.

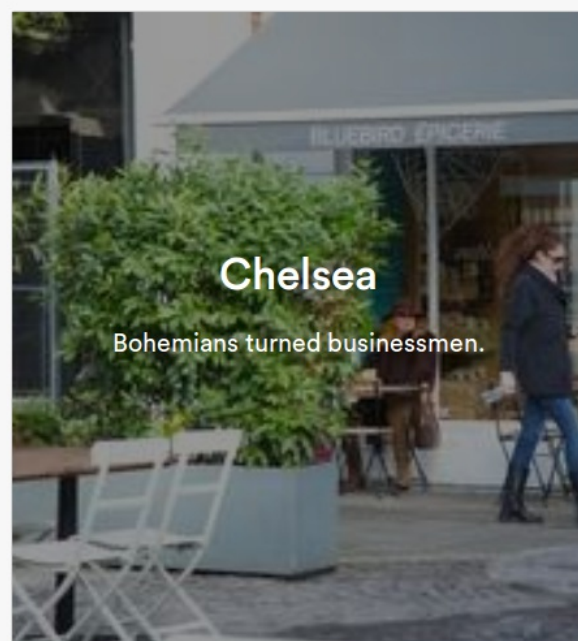
Buzzing • Curry • Arty • Graffiti



Mayfair

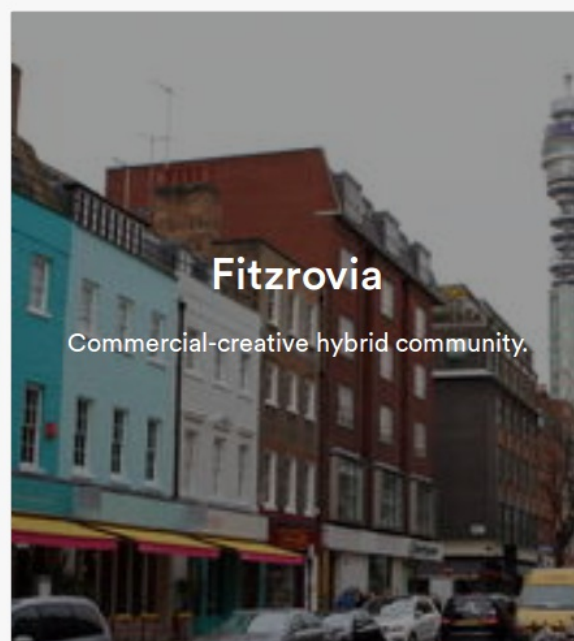
Ostensibly decadent evening outings.

Luxury Shopping • Ballrooms • Heart Of London • Fashionable



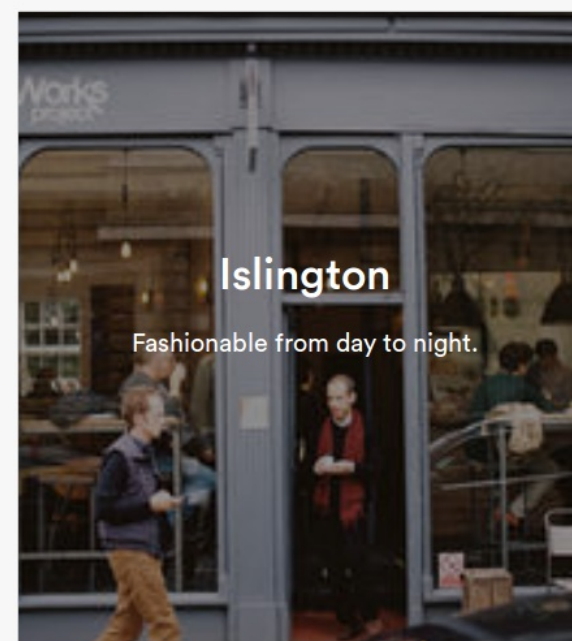
Chelsea

Bohemians turned businessmen.



Fitzrovia

Commercial-creative hybrid community.



Islington

Fashionable from day to night.

Walking directions

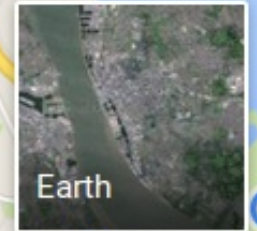
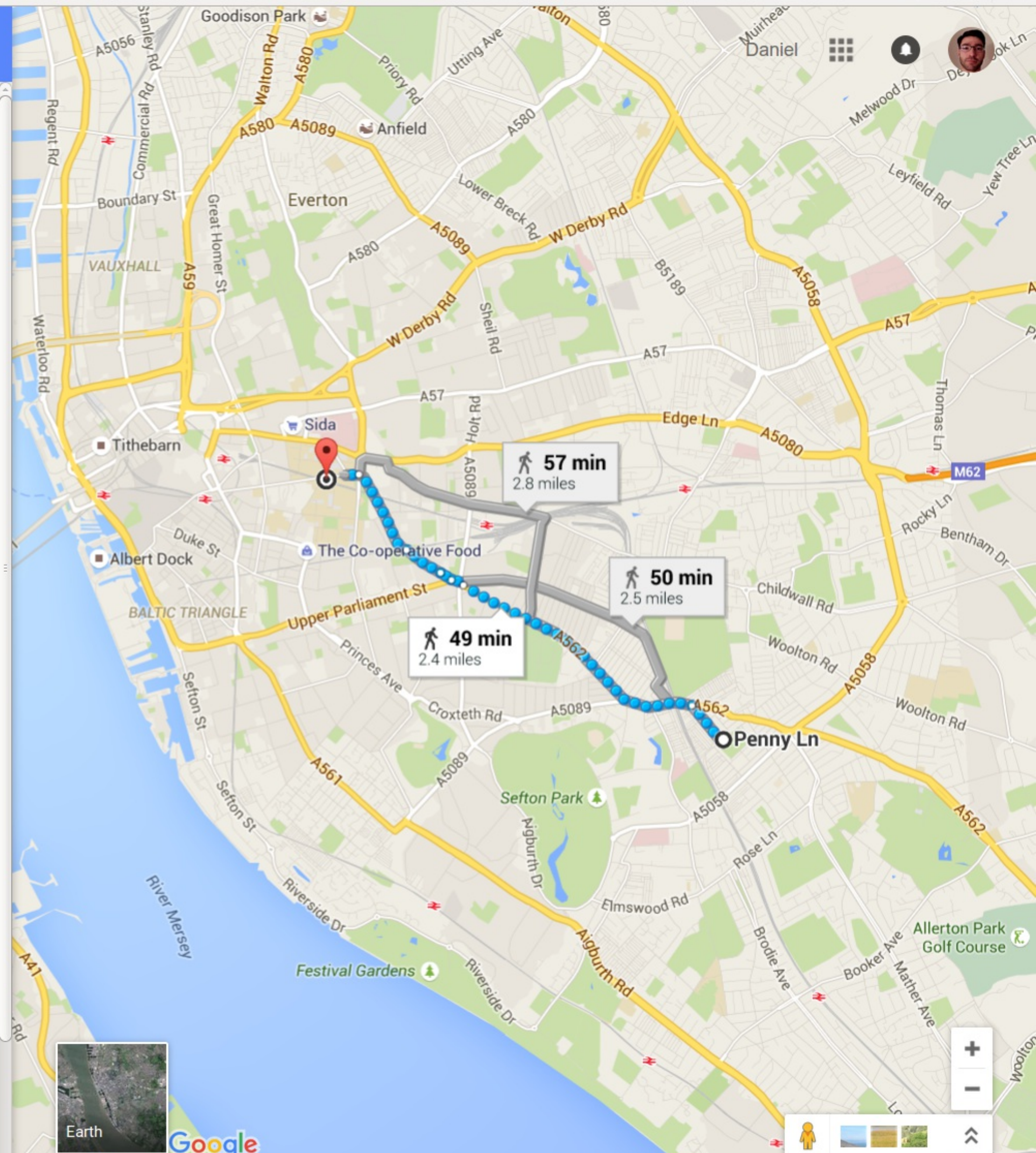
via A562 **49 min**
2.4 miles

Use caution - may involve errors or sections not suited for walking

Penny Ln
Liverpool L18 1DE, UK

- ↑ Head southwest on Penny Ln toward Russell Rd
79 ft
- ↪ Turn right onto Russell Rd
0.2 mi
- ↶ Turn left onto Smithdown Rd/A562
1.3 mi
- ↪ Slight right to stay on Smithdown Rd/A562
Continue to follow A562
364 ft
- ↪ Turn right toward Smithdown Ln
325 ft
- ↑ Continue onto Smithdown Ln
0.2 mi
- ↶ Turn left to stay on Smithdown Ln
0.5 mi
- ↑ Continue straight onto Brownlow Hill/A5048
Continue to follow Brownlow Hill
325 ft

University of Liverpool
Liverpool, Merseyside L69 2DY, United Kingdom



Walking directions

via A562 49 min 2.4 miles

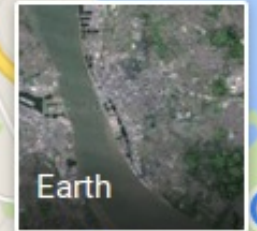
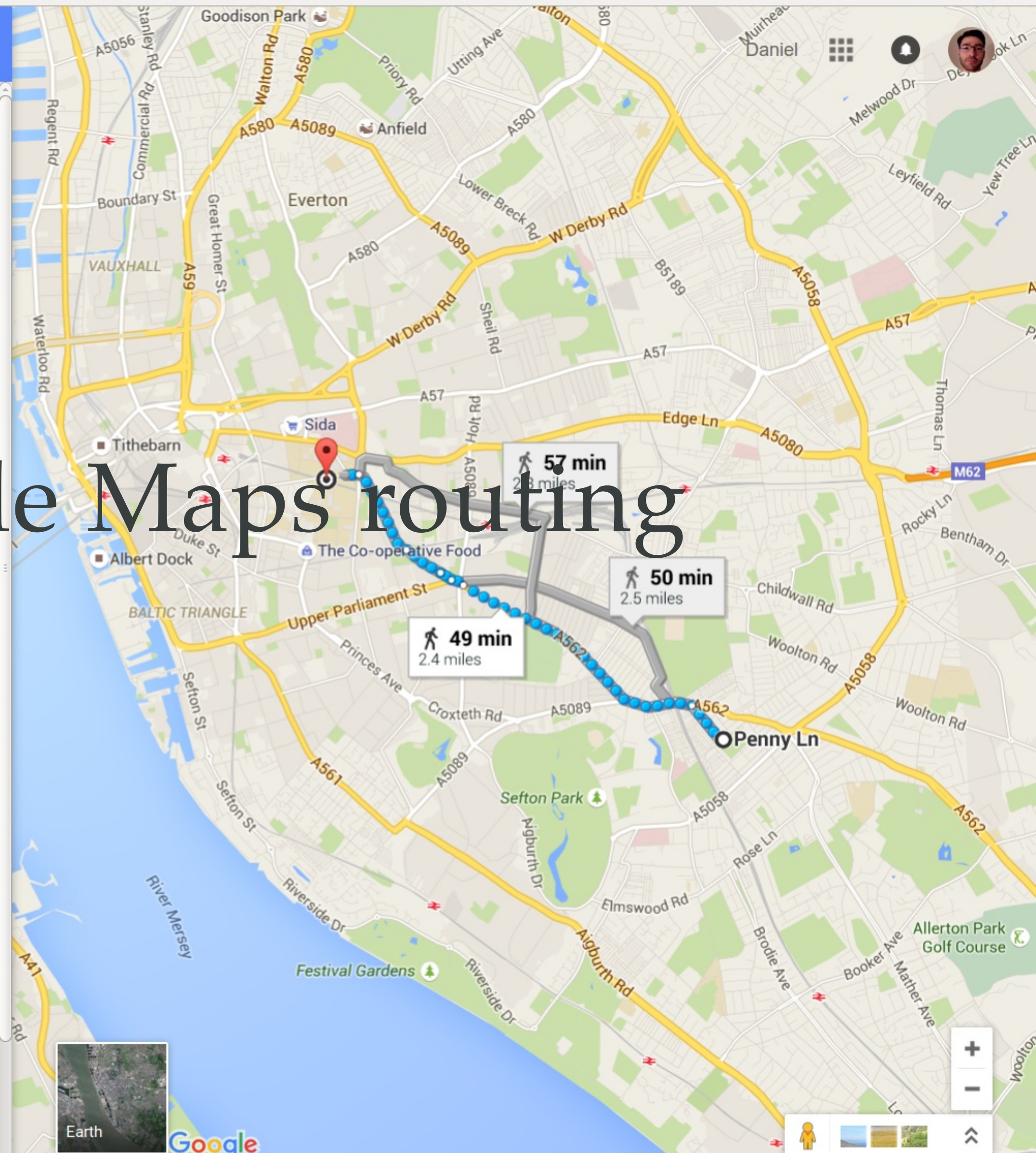
Use caution - may involve errors or sections not suited for walking

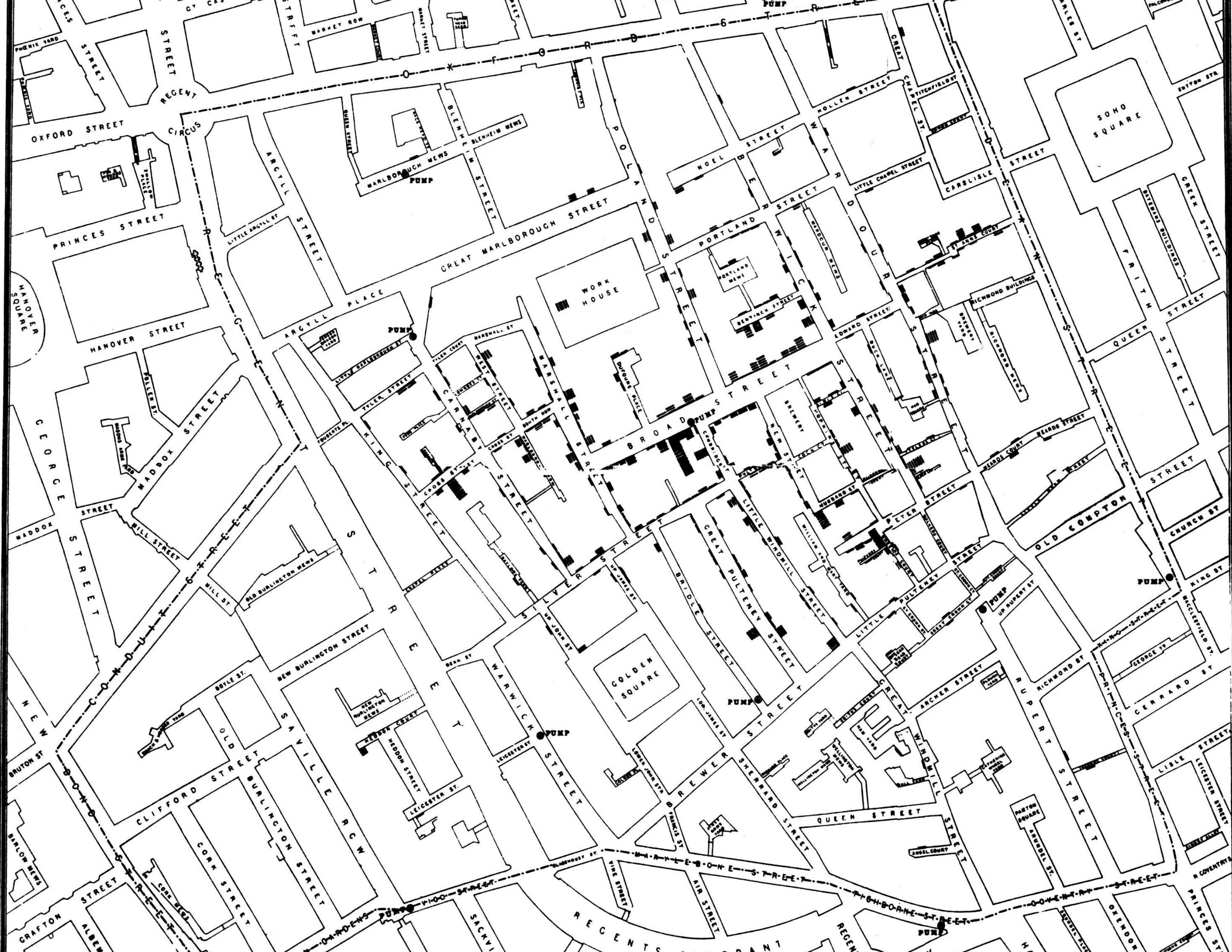
Penny Ln Liverpool L18 1DE, UK

- Head southwest on Penny Ln toward Russell Rd
79 ft
- Turn right onto Russell Rd
0.2 mi
- Turn left onto Smithdown Rd/A562
1.3 mi
- Slight right to stay on Smithdown Rd/A562
Continue to follow A562
364 ft
- Turn right toward Smithdown Ln
325 ft
- Continue onto Smithdown Ln
0.2 mi
- Turn left to stay on Smithdown Ln
0.5 mi
- Continue straight onto Brownlow Hill/A5048
Continue to follow Brownlow Hill
325 ft

University of Liverpool Liverpool, Merseyside L69 2DY, United Kingdom

Google Maps routing







John Snow's cholera map



Geographic Data Science'15 - Lecture 1 by [Dani Arribas-Bel](#) is licensed under a [Creative Commons Attribution-NonCommercial-ShareAlike 4.0 International License](#).